

MANOR

38 DASHWOOD RISE
DUNS TEW | OX25 6JQ



A fantastic opportunity to acquire a property with modern-day improvements already in place including solar panels, an air source heat pump, and a modern kitchen, with the added benefit of far reaching countryside views.

- 2
- Bed icon
- 1
- Sofa icon
- 1
- Bath icon
- D
- Bar chart icon





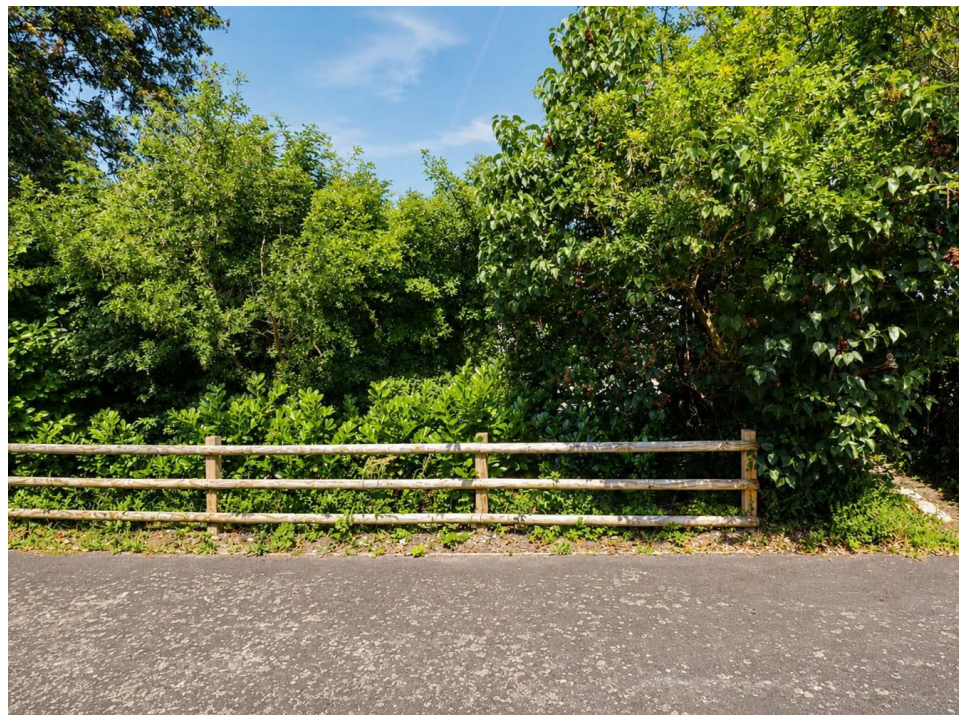
The property offers ample living space, with the standout feature being the open-plan living/dining room. A light, airy space with views opening out onto the surrounding countryside.

You will find two spacious double bedrooms, with the principal room benefiting from modern fitted storage. The kitchen is a practical space finished to a high specification. The main bathroom features a bath with an over-bath shower.

Outside, there is ample frontage, a sizeable lawn area, and parking for two cars plus a garage. The rear garden is of a courtyard design, perfect for entertaining. The property also includes a feature parcel of land at the top of the drive.

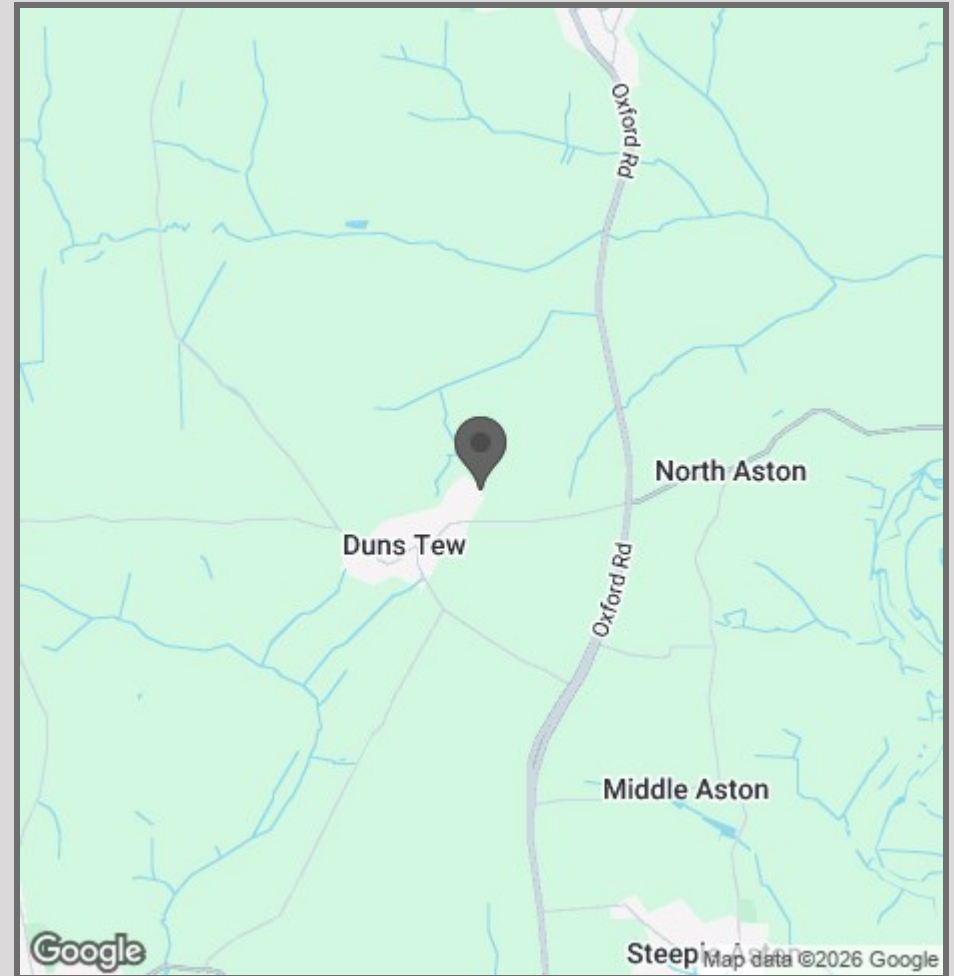
The village is home to The White Horse Inn, a welcoming local pub, as well as a village hall which serves as a space for local events and activities. St Mary Magdalene parish church adds to the village's charm, with the village centre designated an area of special architectural and historic interest.

Please note: An updated EPC will be available shortly.





- Two Double Bedrooms
- Solar Panels
- Air Source Heatpump
- Open-Plan Living
- Modern Kitchen
- Garage
- Off-Street Parking
- Courtyard Garden
- Countryside Views



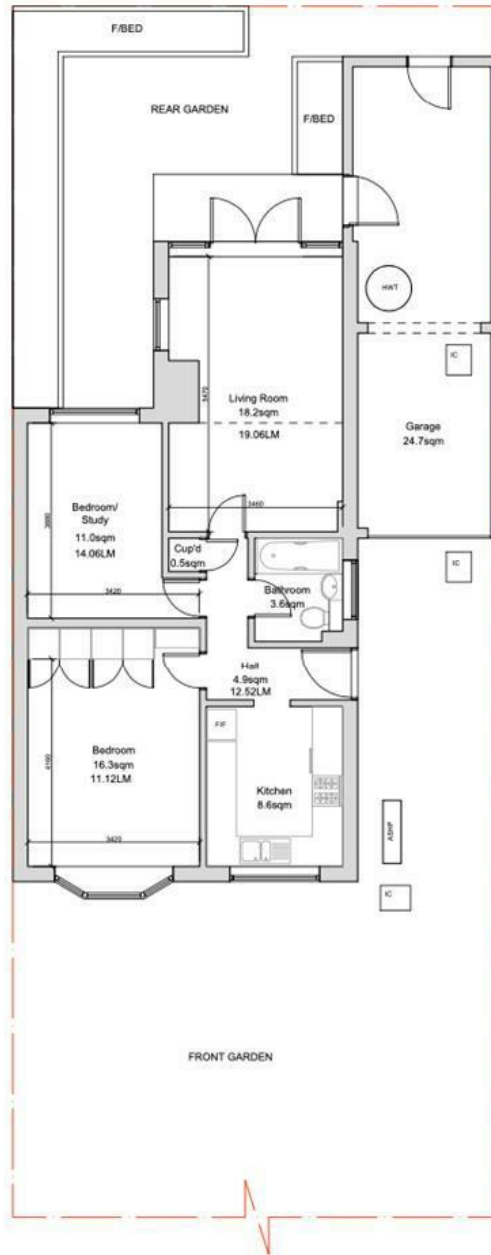
42 High Street
Woodstock
OX20 1TG

01865 955500

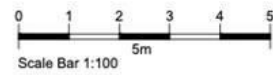
hello@manoroxford.com

www.manoroxford.com

MANOR



EXISTING FLOOR PLAN
Scale 1:100



MANOR